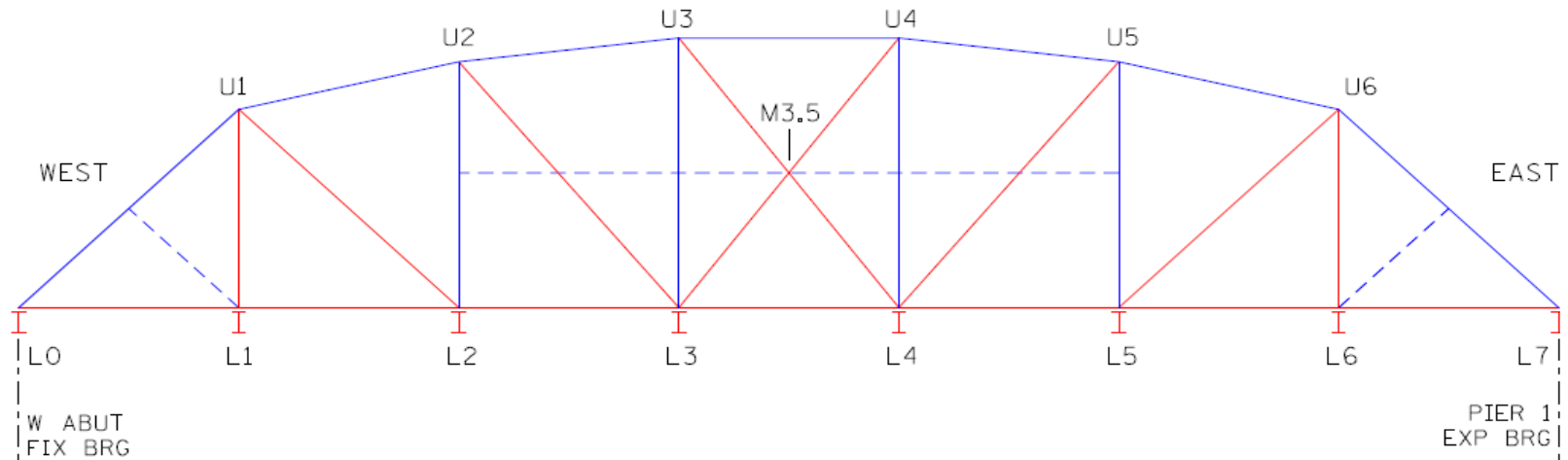


BR 5767 Deck Delamination Survey

Date of Inspection: 4/18/2016

BR 5767 WEST SPAN (ND SIDE)



Enter Percent unsound for each segment:

(Each segment 6' X 25')

				NORTH TRUSS			
S1	20	40	70	40	30	20	50
S2	20	20	30	25	10	60	40
S3	30	40	40	50	20	40	50
S4	50	70	30	40	20	40	60

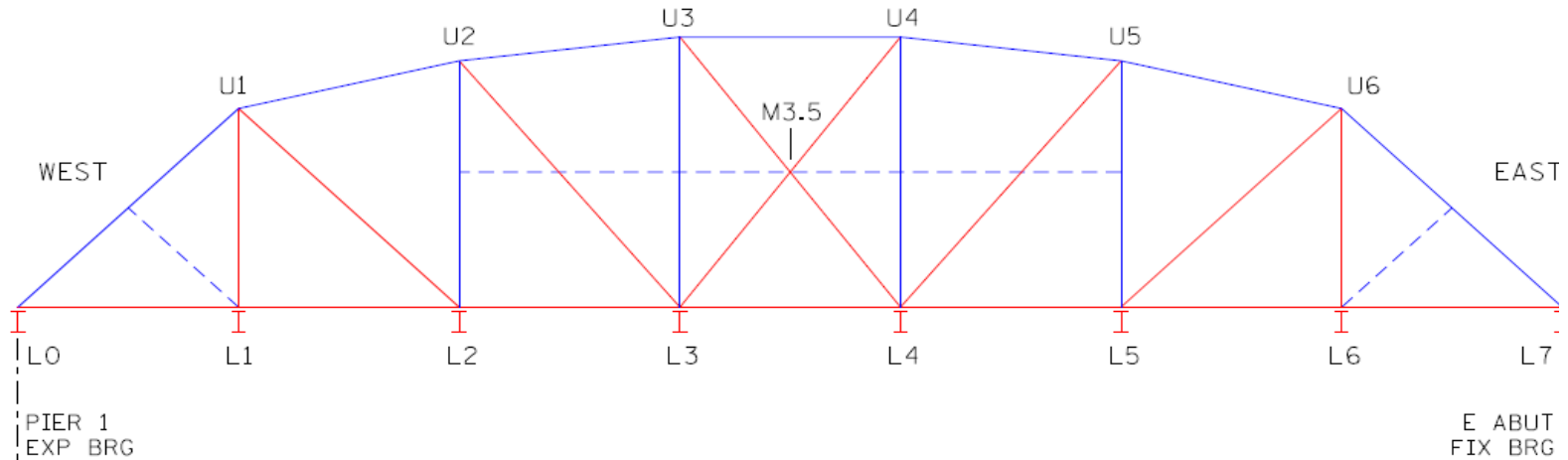
Deck width:	24	ft
Panel Length:	25	ft
No. of Panels:	7	
Deck Area:	4200	sq. ft.

SOUTH TRUSS	
% Unsound:	38
Area Unsound:	1583 sq. ft.

BR 5767 Deck Delamination Survey

Date of Inspection: 4/18/2016

BR 5767 EAST SPAN (MN SIDE)



Enter Percent unsound for each segment:
(Each segment 6' X 25')

	NORTH TRUSS						
S1	20	40	70	40	30	20	50
S2	20	20	30	25	10	60	40
S3	30	40	40	50	20	40	50
S4	50	70	30	40	20	40	60
	SOUTH TRUSS						

Deck width:	24	ft
Panel Length:	25	ft
No. of Panels:	7	
Deck Area:	4200	sq. ft.

% Unsound:	38	
Area Unsound:	1583	sq. ft.